

DBK

FLEET MANAGEMENT  
SOLUTION

**Increasing  
Safety  
and  
Savings  
in  
Transportation**

**DBK FLEET MANAGEMENT SOLUTION**

DBK's Fleet Management Solution is not just Tire Pressure Monitoring. It's a modular solution that includes tire pressure monitoring but so much more. The only complete solution of its kind, DFMS will improve driver safety, increase fuel efficiency, reduce tire blow-outs, decrease overall maintenance costs, and the list goes on.

The proposed TPMS not only offers more features than any system on the market but is one of the few to offer compatibility to GPS/Asset Tracking type products. The system displays current pressures, alerts at lower inflation loss and displays and alerts while on the move or parked.

DBK is proud to present this solution and are confident that a demonstration will prove its value to you. This system offers such a multitude of areas for improving safety and savings in transportation that it's a must have for any company with a fleet of trucks!

**ASSET TRACKING  
TIRE PRESSURE MONITORING  
ENGINE DIAGNOSTICS  
ALL NETWORKED AND TRACKED**



Upon entry at one of your Fueling or Service Stations, the data from the monitor, GPS and JBUS RFID Card are uploaded into the backend software.

**Information obtained  
by the system**

- Tire Pressure
- Travel Speed
- Oil Pressure
- Battery Voltage Reading
- Engine RPMs
- Engine Run Time
- Odometer Reading
- And More...

**Benefits of the solution**

- Driver Safety
- Real-Time Alerts
- Extended Tread Life
- Increased Fuel Efficiency
- Reduced Carbon Emissions
- Decreased Maintenance Costs
- Reduced Roadside Downtime
- Reduced Third Party Liability
- Lower Insurance Costs Due to Lower Accident Rate

## ASSET TRACKING

Fully integrated, fully encompassing wireless networking and GPS for fleets of all types, including back office management software.

### Real-Time Alert Center:

The Real-Time Alert Center shows in "real time" all pressure alerts, low pressure and missing sensor warnings per tire as they occur. These alerts can also be sent to OUTLOOK and to your cell phones via SMS. Each ALERT indicates the specific vehicle and tire that is experiencing a problem, such as, LOW PRESSURE, MISSING PRESSURE SENSOR, NO DATA, PRESSURE ALERT RESET, etc.

### Real-Time Tracking Center:

All tire pressure readings can also be seen in the Tracking Center. The Asset I.D., Time Stamp, Address, and each tire's pressure are monitored in "real time" and shown in GREEN.



### Tracking History:

Our tracking devices will also indicate the exact location and traveled routes of all trucks and vans going back days, weeks, months or even years.



### GEO Fences:

You can also set Geo-Fences and Landmarks at key locations. You will know in "real time" when your trucks have entered or exited a particular area or customer.



Geo-Fences can be placed and viewed at street level around key parking lots, storage facilities, customers, warehouses, airports, etc.

## TIRE PRESSURE MONITORING

### 2 MAJOR COMPONENTS

#### Sensors

Screw onto the valve stem of your vehicle's tires, replacing your dust cap, and transmit pressure readings to your monitor via a coded RF signal.

#### In-Cab Monitor

Continuously displays each tire's pressure and sends audible and visual alerts to pressure drops and raises. The Monitor alerts at 3 levels. The first alert occurs when pressures drop by more than 12.5%. A second, more urgent alert, at a 25% drop and a third, variable high pressure alert at your determined threshold.



#### Drop & Hook System

The Real-Time "Drop & Hook" Systems allows any trailer outfitted with the D&H System to attach, and automatically report tire pressure readings to any tractor that also has the D&H System installed. The fully automated Drop & Hook Systems, the only of its kind, provide fleets with the opportunity to enjoy the benefits of the D&H System, and our integrated solutions, amidst un-married vehicles.

An Intelligent Repeater installs on each trailer and automatically communicates to the Intelligent Monitor when trailer is powered to the tractor.



**Tires are the single largest maintenance cost for vehicle fleet operators. Under inflated tires waste over 5.4 million gallons of fuel everyday (over 2 billion gallons each year) in the U.S. alone.**

#### Improperly inflated tires raise costs due to:

- Fuel economy loss.
- Premature tread wear.
- Premature casing wear and failure.
- Roadside service for tire failures.
- Tire replacement cost.
- Driver downtime/overtime costs.
- Customer dissatisfaction due to delayed shipments.

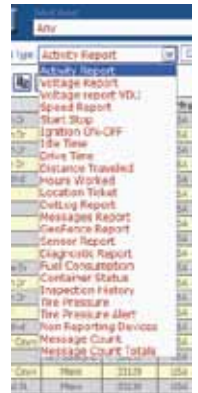
## ENGINE DIAGNOSTICS

Via an RFID enabled device connected to the JBUS card of the truck's engine, Engine Diagnostics are captured and tracked via the Reporting Center.

### Report Center

The Report Center provides an assortment of important reports available in HTML, Excel, Word, CSV and XML. Reports available include:

- Activity Report
- Speed Report
- Idle Time
- Geofence Report
- Sensor Report
- Tire Pressure
- Tire Pressure Alert
- Ignition On/Off
- Voltage Report
- Drive Time
- Distance Traveled
- Inspection History
- Fuel Consumption
- Container Status
- And more...



### Reason Codes

Our Activity Reports contain several types of messages, called Reason Codes, that provide the most current status of each vehicle in the fleet, such as:

- Ignition On
- Ignition Off
- Start
- Stop
- Speed Exceeded
- Heartbeat
- Scheduled Message

